



Autodesk
University
2007

Annotating with Intelligence in AutoCAD®!

Heidi Hewett – Autodesk, Inc.

GD219-4P Annotations are a crucial part of almost any drawing and creating them can consume a considerable amount of your workday. New and improved functionality in AutoCAD enables you to annotate your drawings with greater flexibility and efficiency than ever before.

About the Speaker:

Heidi began using AutoCAD software in 1986. She joined Autodesk in 1992 and has held a variety of AutoCAD-related positions, including product support technician, training specialist, and senior applications engineer. In her current position as a technical marketing manager, Heidi assists the AutoCAD development teams in developing and delivering technical marketing material for AutoCAD and AutoCAD LT.
www.heidihewett.blogs.com



Autodesk
University
2007



Annotating with Intelligence in AutoCAD®!

Annotations are a crucial part of almost any drawing, and creating them can consume a considerable amount of your workday. In earlier versions of AutoCAD® software, creating annotations in model space required manual calculations and you often had to recreate and copy annotations to multiple layers in order to display them appropriately at different scales. Maintaining multiple copies of the same data was difficult and prone to error.

New and improved functionality in AutoCAD® 2008 software enables you to annotate your drawings with greater flexibility and efficiency than previous versions. You can apply new annotation scaling functionality to any of the following object types:

- Text (Text, Mtext)
- Dimensions (Dimensions, Leaders, Tolerances)
- Multileaders (New in AutoCAD 2008)
- Hatches
- Blocks
- Attributes

With annotation scaling enabled, AutoCAD® 2008 software automatically calculates and applies properties such as text height based on the current annotation scale. It also uses the annotation scale to determine which annotations are visible in which viewports. You can control the location of individual scale representations while having the information itself coming from a single source. In addition to applying annotation scaling to the above object types, linetypes applied to any objects automatically adjust themselves based on the current annotation scale.

How do you scale annotations prior to AutoCAD® 2008?

To better understand how to use the new annotation scaling in AutoCAD® 2008, think about how you create dimension and text annotations in model space using traditional methods.

Traditional Process for Scaling Annotations	Examples	
	Imperial Units	Metric Units
1. Decide the PaperSpace text height for annotations drawn in ModelSpace.	3/32"	2.5mm
FOR DIMENSIONS:		
2. Set the viewport scale.	1/8"=1'	1:100
3. Determine the scale factor.	1/8"x12"=96	100
4. Set the dimension text (DIMTXT) to the proper height.	3/32"	2.5mm
5. Set the dimension scale (DIMSCALE) to the scale factor.	96	100
FOR TEXT OR MTEXT:		
6. Determine the model space height for text.	3/32"x96=9"	250mm
7. Set the text size (TEXTSIZE) to the model space height.	9"	250mm

What happens if you decide to change the scale after you've determined and applied the proper annotation sizes based on a specific scale? Using traditional methods, you would have to repeat the entire process for the new scale and recreate or modify the existing geometry.



How does annotation scaling in AutoCAD 2008 compare to traditional methods?

Creating dimension and text annotations in AutoCAD 2008 is similar to traditional methods except that it minimizes the tedious model space calculations.

Comparison of Traditional and New Processes for Scaling Annotations	Examples	
	Imperial Units	Metric Units
1. Decide the PaperSpace text height for annotations drawn in ModelSpace.	3/32"	2.5mm
FOR DIMENSIONS:		
2. Set the viewport annotation scale.	1/8"=1'	1:100
3. Determine the scale factor.	1/8"x12"=96	400
4. Set the dimension text (DIMTXT) to the proper height	3/32"	2.5mm
5. Set the dimension scale (DIMSCALE) to the scale factor	96	400
FOR TEXT OR MTEXT:		
6. Determine the model space height for text.	3/32"x96=9"	250mm
7. Set the text size (TEXTSIZE) to the model space proper paper height.	9" 3/32"	250mm 2.5mm

How do you scale annotations in AutoCAD 2008?

After comparing the traditional process of creating dimension and text annotations with the new process in AutoCAD 2008, you can see that the new process is not significantly different, yet considerably simpler.

Simplified Process for Scaling Annotations	Examples	
	Imperial Units	Metric Units
1. Decide the PaperSpace text height for annotations drawn in ModelSpace.	3/32"	2.5mm
FOR DIMENSIONS:		
2. Set the annotation scale.	1/8"=1'	1:100
3. Set the dimension text (DIMTXT) to the proper height	3/32"	2.5mm
FOR TEXT OR MTEXT:		
4. Set the text size (TEXTSIZE) to the proper paper height.	3/32"	2.5mm

Annotation Scaling Tools

To begin using the powerful new annotation scaling functionality, you'll need to familiarize yourself with new annotation scaling tools including Viewport Lock, Viewport Scale, and Annotation Scale.

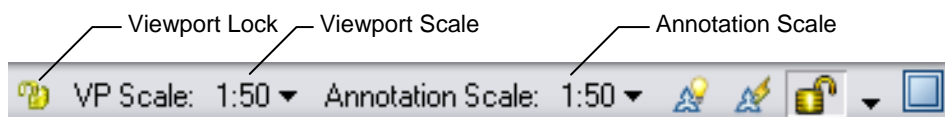


Figure 1. Annotation Scaling Tools



The Viewport Lock is displayed on the Status Bar when a layout viewport is selected or active. Although the viewport locking button on the Status Bar is new in AutoCAD 2008, the ability to lock viewports through other methods, including the right-click menu and Properties window, has been available since the AutoCAD 2000 release. Locking a viewport after setting an appropriate viewport scale prevents you from inadvertently zooming or changing the scale.

The Viewport Scale (VP Scale) control is also displayed on the Status Bar when a layout viewport is selected or active. It enables you to view and edit the scale at which the active viewport is displayed. Although the Viewport Scale control is new to the Status Bar in AutoCAD 2008, it has been available via the Viewports toolbar since AutoCAD 2000. Before AutoCAD 2000, you could set the viewport scale using Zoom XP.

The Annotation Scale control is completely new in AutoCAD 2008. It displays on the Status Bar when a layout viewport is selected or active as well as when the Model tab is active. The Annotation Scale sets the CANNOSCALE system variable, which is what tells AutoCAD the scale to use when creating annotations. Without realizing it, this control is how you are specifying the scale factor! Typically you want AutoCAD to assume an annotation scale that is the same as the viewport scale. When you set either of these controls from the Status Bar, AutoCAD automatically updates the other one to match, keeping them in sync. They can get out of sync, however, if you change the viewport scale by zooming or using the Viewports toolbar. To sync them back up, simply set either one using the Status Bar.

Annotative Objects

In AutoCAD 2008, all object types that support annotation scaling (Text, Mtext, Dimensions, Leaders, Multileaders, Tolerances, Blocks, Attributes, Hatches) include a new Annotative object property. You can view and modify the Annotative property using the Properties window as well as object-specific editors such as the Text Formatting toolbar, Hatch dialog boxes, etc.

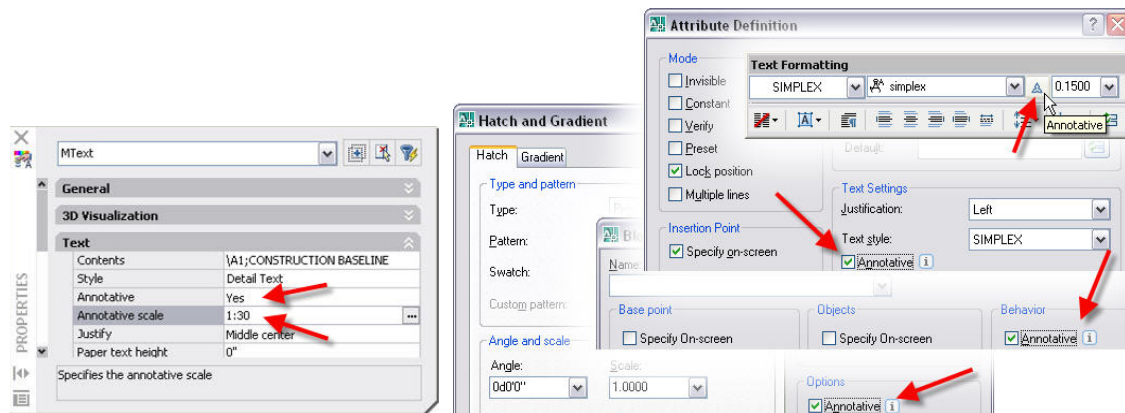


Figure 2. Annotative Object Property



In addition, for objects that use styles (Text, Dimensions, Multileaders), you can create and apply annotative styles.

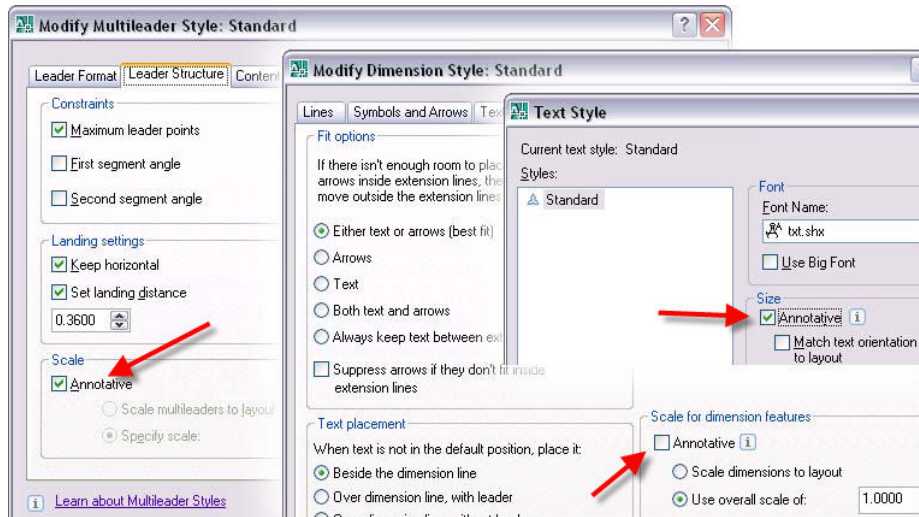


Figure 3. Annotative Styles

When an object's Annotative property is enabled, a new Annotative Scale property is automatically applied to the object. Every annotative object must include one or more annotative scales. These are the scales at which you want the object to be represented. Using traditional methods, if you wanted an object to be displayed at several different scales, while maintaining the same height, you created several copies of the object on multiple layers. Then you made each object a different model space height based on both the scale at which you were going to display it and the paper height at which you wanted it displayed. Annotative object scales perform the same function with fewer steps and no data redundancy. You can view, add, and delete the objects scales supported by a selected object using the OBJECTSCALE command. The list of available scales that you can add to an object comes from the general AutoCAD Scale List, which you can customize with the SCALELISTEDIT command.

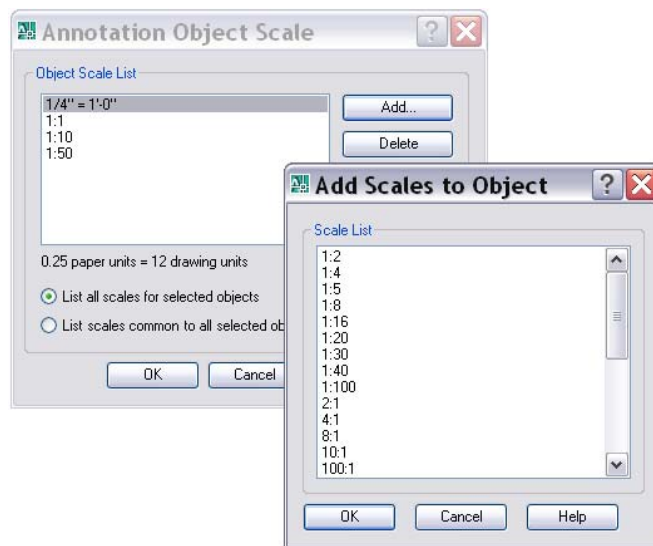


Figure 4. Annotative Object Scales



You can differentiate annotative objects and styles from traditional ones by their annotative icons. When you pass your cursor over an annotative object, an annotative icon is automatically displayed near the cursor. A single icon indicates that the object supports only one annotative scale and a double icon indicates that the object supports two or more annotative scales. Annotative icons are also used to indicate which styles in a style list are annotative.

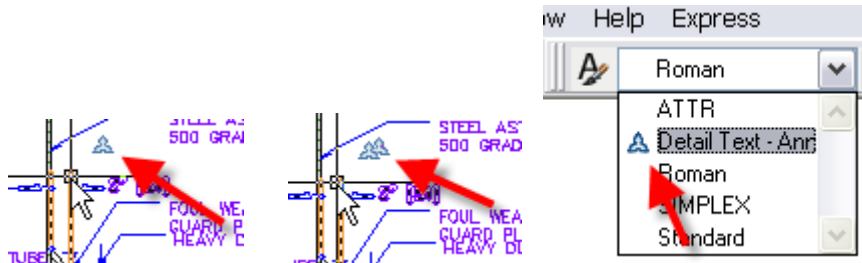


Figure 5. Annotative icons.

The annotative scales of an object determine the size as well as the visibility of the object's scale representations. When a viewport or the Model tab is set to a particular annotation scale, only the annotative objects that support the current annotation scale are displayed.

More Annotation Scaling Tools

Since the visibility of annotative objects is determined by the current Annotation Scale and the objects' supported Annotative Scales, it is possible for some or all objects to "disappear" when you change the annotation scale to a value that has no current scale representations. You can quickly display all annotative objects, regardless of their supported annotative scales, using the Annotation Visibility control on the Status Bar (the annotative/light bulb button). You can then select any of the objects and add or delete Annotative Scales. To avoid confusion about what objects are or are not supported by the current Annotation Scale, you should disable Annotation Visibility except when needed.

The last annotation control on the Status Bar (the annotative/lightning bolt) enables you to automatically add scales to annotative objects when the annotation scale changes. For example if the annotations in the current viewport only include an Annotative object scale of 1:50 and you want to change the viewport/annotation scale to 1:100, you can turn on this toggle so that the new scale (1:100) is automatically added to all of the annotative objects within that viewport. If you are experimenting with various viewport sizes, it is best to disable this option until you settle on a size. If not, you might inadvertently add unwanted annotative scales to the objects.

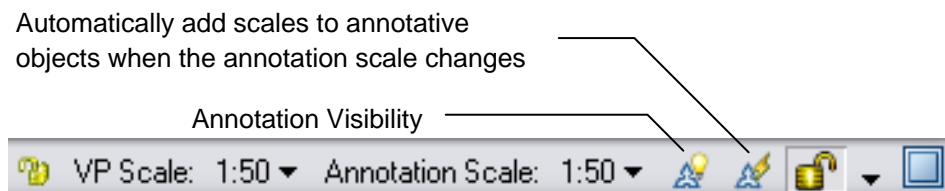


Figure 6. More Annotation Scaling Tools



Visual Fidelity of Annotative Objects

Since Annotation Scaling is new to AutoCAD 2008, earlier releases of AutoCAD do not understand the annotative functionality. However, AutoCAD 2008 includes a control that enables you to maintain visual fidelity for annotative objects when opening the drawing in an earlier release of AutoCAD. You can access this control on the Open and Save tab of the Options dialog box or with the SAVEFIDELITY system variable. When visual fidelity is on, annotative objects are decomposed and scale representations are saved to separate layers, emulating the traditional methods for creating annotations at different sizes.

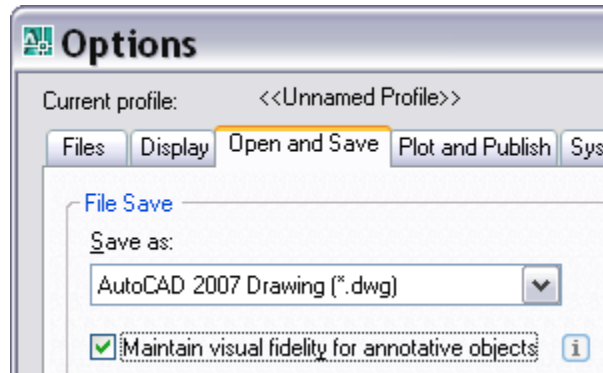


Figure 7. Visual Fidelity Control

Transitioning to Annotation Scaling

Given a general understanding of the concepts and tools for annotation scaling in AutoCAD 2008, you can begin taking advantage of this powerful new functionality. The steps for implementing automated annotation scaling in AutoCAD 2008 vary slightly depending on the types of objects and whether they are new or existing.

Working with Text, Dimensions, and Multileaders

To implement annotation scaling for objects that use styles, including text, dimensions, and multileaders, you should first create annotative styles. You can create new styles or edit your existing ones. If you've created multiple styles for the sole purpose of producing annotations at different scales, you can delete the extra styles!

To Create/Edit Styles

1. Access the style definition by creating a new one or modifying an existing one.
 - Set the desired size for text, arrowheads, etc. This is the real (paper) size of the objects.
 - Enable the Annotative property. The location of this control varies for each type of style:
 - Text Style Dialog Box
 - Dimension Style Manager (Fit Tab)
 - Multileader Style Manager (Leader Structure Tab)
2. Save the updated style definition.



To Create New Text, Dimensions, and Multileaders

After you've defined the annotative styles, you can quickly create new annotative objects based on those styles!

1. Set an Annotative Style. You can identify annotative styles by the annotative icons displayed next to the style names in the style lists.
2. Set the Annotation Scale for the current viewport or Model tab to an appropriate size. This is what determines the default annotative scale for the new objects you create.
3. Draw Text, Dimensions, and Multileaders.
4. Use OBJECTSCALE to add/remove annotative scales for selected objects as needed.

To Update Existing Text, Dimensions, and Multileaders

1. Edit the associated styles so they are annotative (See *To Create/Edit Styles* above).
2. Set the Annotation Scale for the current viewport or Model tab to the scale that you assumed when creating the original annotations. For example, if you created text at a height of 9" (or 250mm) because you wanted it to be 3/32" (or 2.5mm) tall when scaled at 1/8"=1' (or 1:100), you should set the Annotation Scale to 1/8"=1' (or 1:100).
3. Use ANNOUPDATE and select the objects that you want to support the current Annotation Scale.
4. Repeat steps 1-2 for objects that you want to support a different Annotation Scale.
5. Use OBJECTSCALE to add/remove annotative scales for selected objects as needed.

The process for converting existing text, dimensions, and multileaders to annotative ones is just as easy as creating new annotative objects. However, understanding what AutoCAD is doing behind the scenes might seem complicated. In a sense, AutoCAD is reversing the original calculations that enabled you to determine the model space height of the annotations. When you convert an existing object to annotative, AutoCAD uses the current annotation scale and the current model space size of the geometry to determine the paper size of the object. You can then view and edit the paper size of the object if you wish to change it, rather than having to calculate obscure values for the model size.

Working with Hatches

Using annotation scaling you can easily create hatch objects that automatically maintain the hatch size even when the viewport scale changes.

To Create New Hatches

1. Set the Annotation Scale for the current viewport or Model tab to an appropriate size. This is what determines the default annotative scale for the new objects you create.
2. Access the Hatch and Gradient dialog box.
 - Ensure that the Annotative property is enabled.
 - Apply other hatch properties as usual.

To Update Existing Hatches

1. Set the Annotation Scale for the current viewport or Model tab to the scale that you assumed when creating the original hatches.
2. Select the hatch objects that you want to support the current annotation scale and enable the Annotative property using the Hatch Edit dialog box or the Properties window.



3. Repeat steps 1-2 for hatch objects that you want to support a different Annotation Scale.
4. Use OBJECTSCALE to add/remove annotative scales for selected hatch objects as needed.

Working with Blocks

Annotative block definitions enable you to insert block references that are consistently sized, regardless of the viewport scale. In general, annotative blocks would be symbols that are not drawn at real sizes for real objects. For example, you probably wouldn't want the stove or sink blocks in a floor plan to be annotative because you want them to scale up or down with the rest of the geometry. However, the window tags or the receptacles would make sense as annotative objects because you probably want them to remain at a consistent size even when the viewport scale changes.

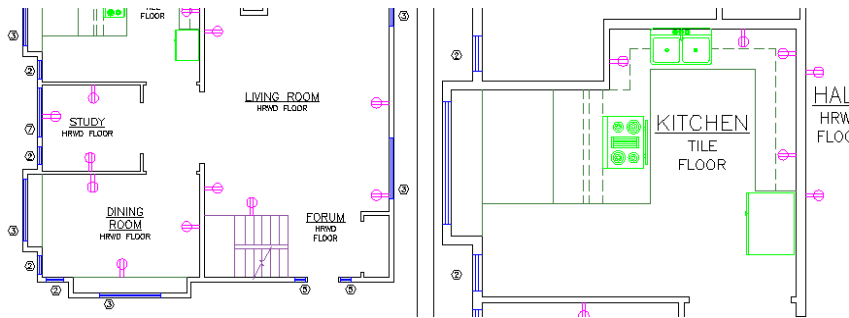


Figure 8. Annotative versus non-annotative blocks.

You can apply the annotative property to block definitions within a drawing file or to individual drawing files that can be inserted as blocks. Although the Annotative property is stored in the block definition, the object's Annotative Scales are applied to each individual block reference.

To Create/Update Block Definitions

1. Access the block definition in the Block Editor.
 - Set the Annotation Scale at 1:1.
 - Ensure block geometry is drawn at the size you want it represented.
 - Enable the Annotative property in the Property Palette.
2. Save the updated block definition.

To Create/Update Block drawing files (DWG™)

1. Create/Open the block geometry in the Drawing Editor.
 - Ensure block geometry is drawn at the size you want it represented.
 - Enable the ANNOTATEDWG system variable. Note: You can only enable the ANNOTATEDWG variable for drawings that contain no annotative objects.
2. Save the updated drawing file.

To Insert New Block references

1. Ensure the block definition is annotative.
2. Set the Annotation Scale for the current viewport or Model tab to an appropriate size. This is what determines the default annotative scale for the blocks you insert.
3. Insert blocks with a unit scale of 1.
4. Use OBJECTSCALE to add/remove annotative scales for selected block objects as needed.



To Update Existing Block References

1. Ensure the block definition is annotative.
2. Ensure the inserted scale of block references is 1.
3. Use OBJECTSCALE to add/remove annotative scales for selected block insertions as needed.

Working with Attributes

You can apply the annotative property to block attribute definitions to ensure the attribute text within non-annotative blocks automatically adjusts based on the viewport's annotation scale. You cannot include annotative attributes or any other annotative objects within an annotative block.

To create new attribute definitions

1. Access the block definition in the Block Editor.
2. Set the Annotation Scale at 1:1.
3. Access the Attribute Definition dialog box.
 - Ensure that the Annotative property is enabled.
 - Set the Text Height to the proper paperspace text height.
 - Apply other attribute properties as usual.
4. Insert the attribute definition into the block definition.
5. Save the updated block definition.
6. Use ATTSYNC to synchronize existing block insertions with the new attributes.

To update existing attribute definitions

1. Open the block definition in the Block Editor.
2. Set the Annotation Scale at 1:1.
3. Select the attribute definitions and open the Properties window
 - Enable the Annotative property.
 - Set the Paper Text Height to the proper paperspace size.
4. Save the updated block definition.
5. Use ATTSYNC to synchronize existing block insertions with the updated attributes.

Using the new annotation scaling tools in AutoCAD 2008, you can shave hours off the time you typically spend calculating scale factors and creating, editing and managing drawing annotations.